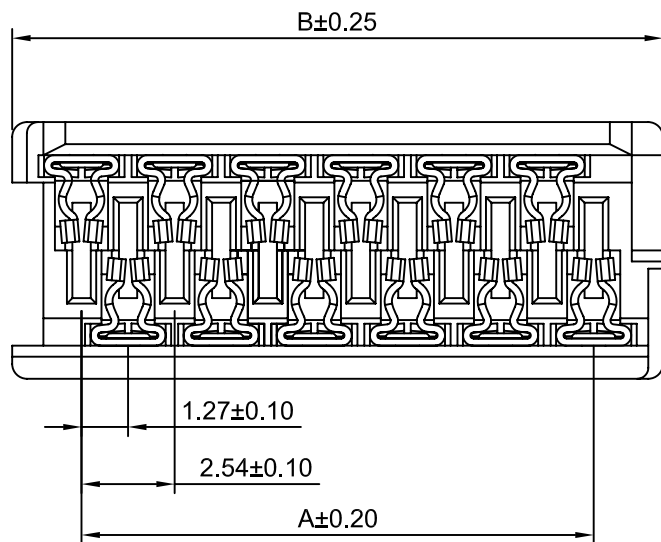
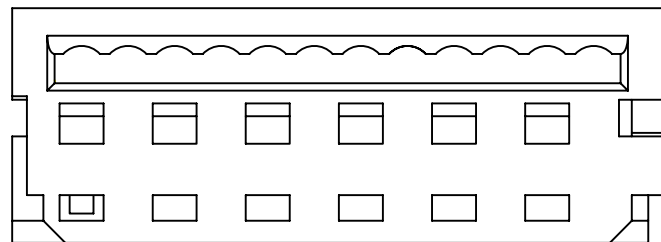
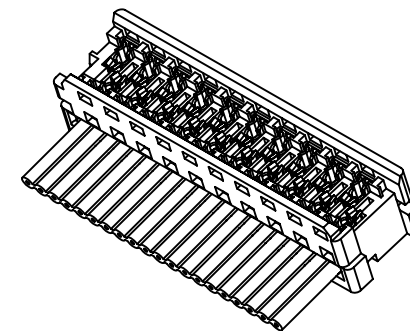


修订 REV	标记 MARK	修改摘要 REVISION DESCRIPTION	签名 SIGNATURE	日期 DATE
AO		NEW RELEASE	WANG	2017-01-10



Ordering Information & Dimensions

Circuits	Dimensions(mm)		Circuits	Dimensions(mm)	
	A	B		A	B
4P	3.81	7.59	16P	19.05	22.83
6P	6.35	10.13	18P	21.59	25.37
8P	8.89	12.67	20P	24.13	27.91
10P	11.43	15.21	22P	26.67	30.45
12P	13.97	17.75	24P	29.21	32.99
14P	16.51	20.29	26P	31.75	35.53

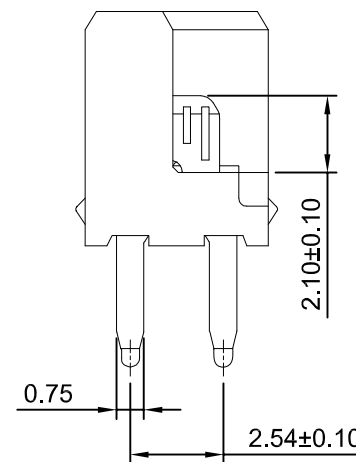
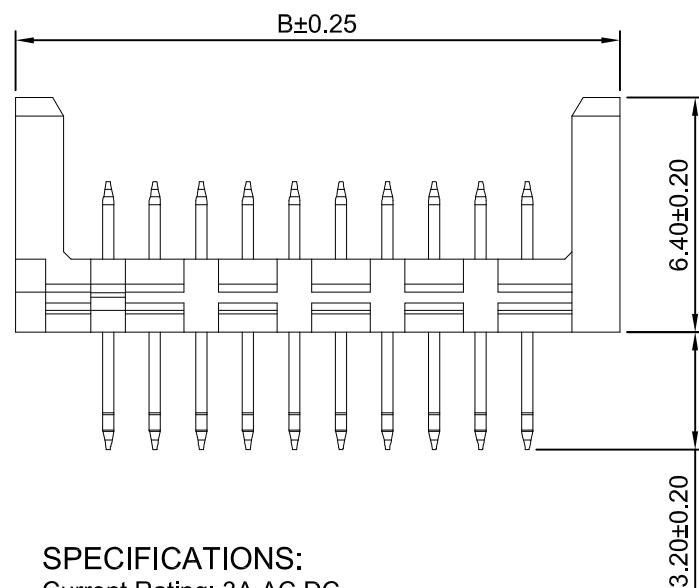
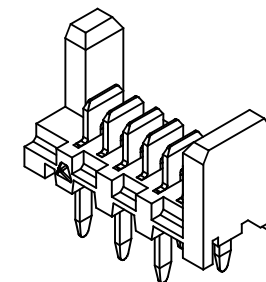
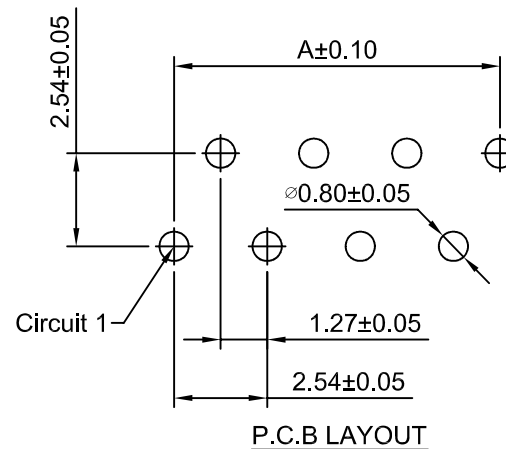
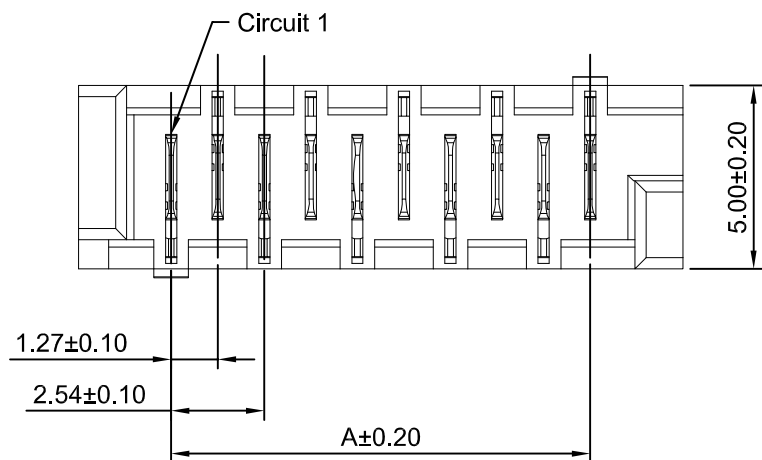
**SPECIFICATIONS:**

Current Rating: 1.2A AC,DC  
Voltage Rating: 250V AC,DC  
Temperature Range: -25°C~+85°C  
Contact Resistance: 20mΩ Max  
Insulation Resistance: 1000MΩ Min  
Withstanding Voltage: 500V AC/minute  
Housing Material: PBT, UL94V-0(White)  
Terminal Material: Phosphor Bronze/Tin over Nickel

**深圳市华德共创科技有限公司**  
Shenzhen Huade co-create Technology Co.,LTD  
TEL : 0755-27129737 FAX : 0755-29940187

-TOLERANCES- UNLESS OTHERWISE SPECIFIED 公差参数表					TITLE: 产品名称: 1.27mm Pitch Housing							
X.X	±0.30	X.X°	±3°	APPD: 核准:	XIE				PART NO: 产品编号:	HDGC1272H-XP		
X.XX	±0.30	X.XX°	±2°	CHECK: 校对:	WANG				DATE	SCALE	UNIT	CODE NUMBER
X.XXX	±0.10	X.XXX°	±1°	DRAW: 绘图:	WANG				2017-01-10	5:1	mm	A008

修订 REV	标记 MARK	修改摘要 REVISION DESCRIPTION	签名 SIGNATURE	日期 DATE
AO		NEW RELEASE	WANG	2017-01-10



Ordering Information & Dimensions

Circuits	Dimensions(mm)		Circuits	Dimensions(mm)	
	A	B		A	B
4P	3.81	8.86	16P	19.05	24.10
6P	6.35	11.40	18P	21.59	26.64
8P	8.89	13.94	20P	24.13	29.18
10P	11.43	16.48	22P	26.67	31.72
12P	13.97	19.02	24P	29.21	34.26
14P	16.51	21.56	26P	31.75	36.80

**SPECIFICATIONS:**

Current Rating: 3A AC,DC  
Voltage Rating: 250V AC,DC  
Temperature Range:-25°C~+85°C  
Contact Resistance: 20mΩ Max  
Insulation Resistance: 1000MΩ Min  
Withstanding Voltage:1500V AC/minute  
Housing Material: Nylon 66,UL94V-0(Black)  
Terminal Material: Phosphor Bronze/Tin over Nickel



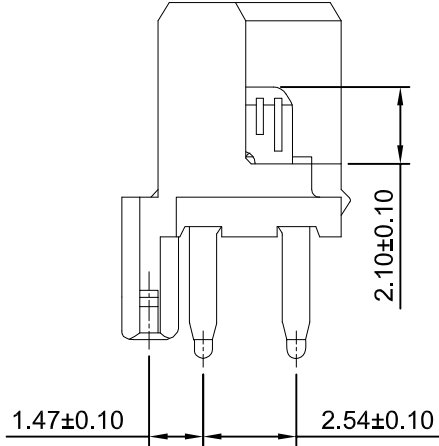
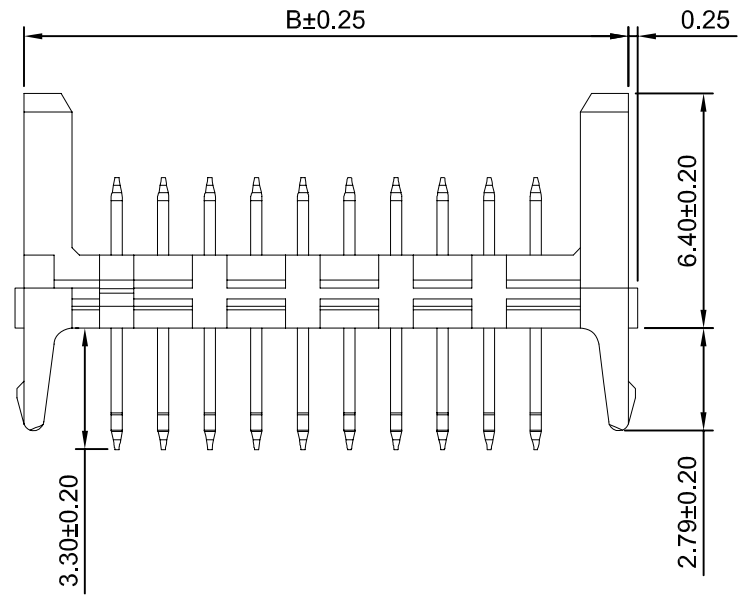
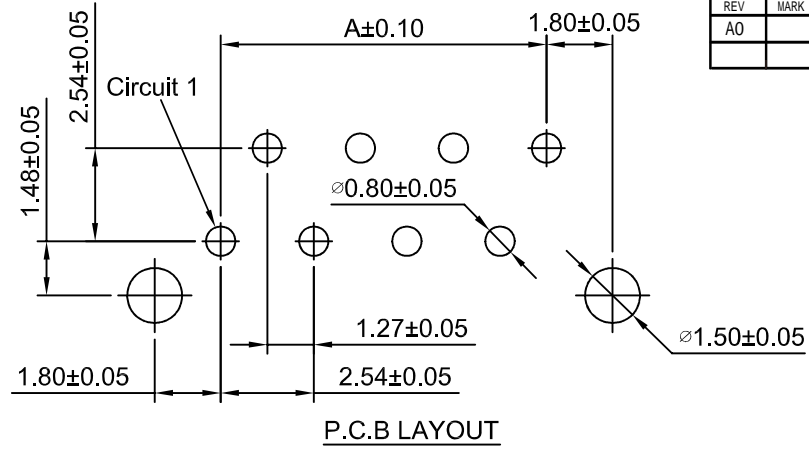
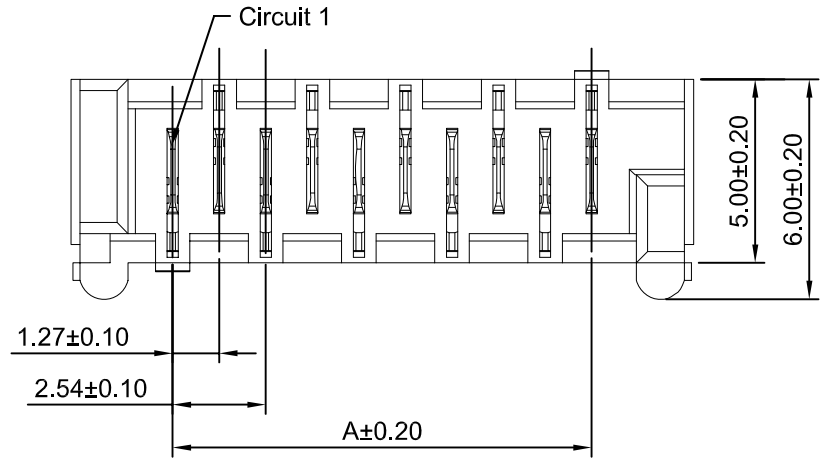
深圳市华德共创科技有限公司

Shenzhen Huade co-create Technology Co.,LTD

TEL : 0755-27129737 FAX : 0755-29940187

-TOLERANCES- UNLESS OTHERWISE SPECIFIED 公差参数表				TITLE: 1.27mm Pitch 产品名称: 180° Wafer	
X.X	±0.30	X.X°	±3°	APPD: 核准:	XIE
X.XX	±0.30	X.XX°	±2°	CHECK: 校对:	WANG
X.XXX	±0.10	X.XXX°	±1°	DRAW: 绘图:	WANG
PART NO: 产品编号:		HDGC1272WV-XP			
DATE	SCALE	UNIT	CODE NUMBER		
2017-01-10	5:1	mm	A008		

修订 REV	标记 MARK	修改摘要 REVISION DESCRIPTION	签名 SIGNATURE	日期 DATE
AO		NEW RELEASE	WANG	2017-01-10



Ordering Information & Dimensions

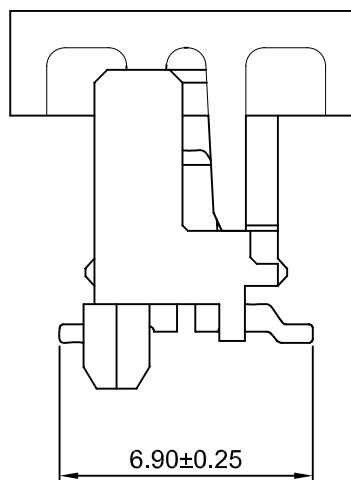
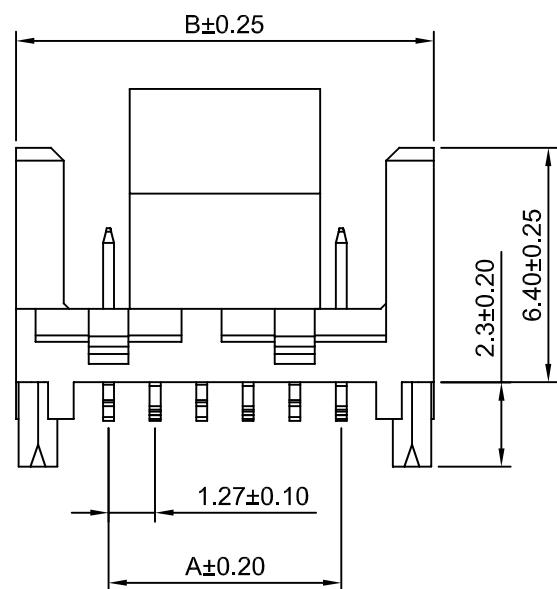
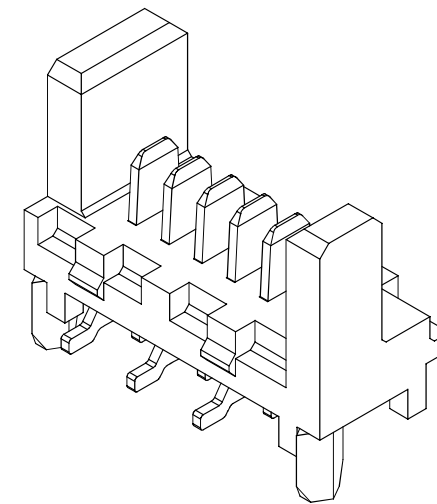
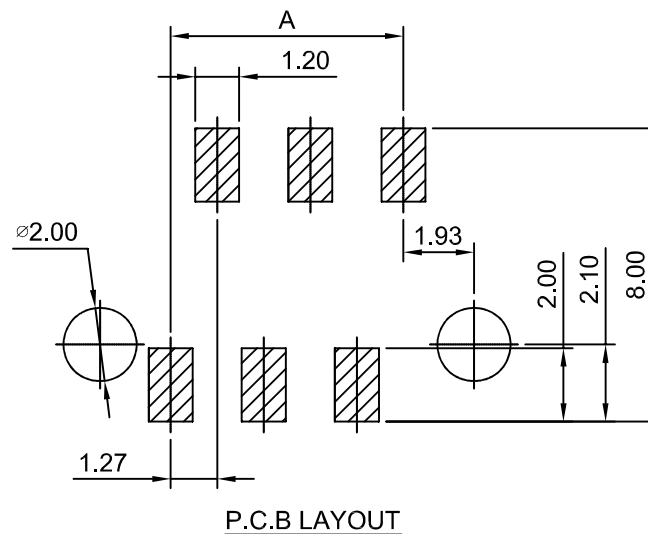
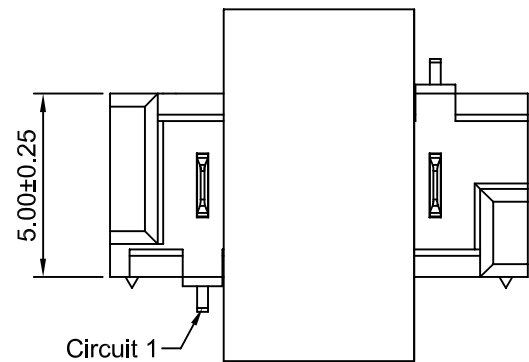
Circuits	Dimensions(mm)		Circuits	Dimensions(mm)	
	A	B		A	B
4P	3.81	8.86	16P	19.05	24.10
6P	6.35	11.40	18P	21.59	26.64
8P	8.89	13.94	20P	24.13	29.18
10P	11.43	16.48	22P	26.67	31.72
12P	13.97	19.02	24P	29.21	34.26
14P	16.51	21.56	26P	31.75	36.80

**SPECIFICATIONS:**  
 Current Rating: 3A AC,DC  
 Voltage Rating: 250V AC,DC  
 Temperature Range:  $-25^{\circ}\text{C} \sim +85^{\circ}\text{C}$   
 Contact Resistance: 20m $\Omega$  Max  
 Insulation Resistance: 1000M $\Omega$  Min  
 Withstanding Voltage: 1500V AC/minute  
 Housing Material: Nylon 66, UL94V-0(Black)  
 Terminal Material: Phosphor Bronze/Tin over Nickel

**深圳市华德共创科技有限公司**  
 Shenzhen Huade co-create Technology Co.,LTD  
 TEL : 0755-27129737 FAX : 0755-29940187

-TOLERANCES- UNLESS OTHERWISE SPECIFIED 公差参数表				TITLE: 1.27mm Pitch 产品名称: 180° Wafer						
X.X	$\pm 0.30$	X.X°	$\pm 3^{\circ}$	APPD: 核准:	XIE			PART NO: 产品编号:	HDGC1272WV-F-XP	
X.XX	$\pm 0.30$	X.XX°	$\pm 2^{\circ}$	CHECK: 校对:	WANG	DATE	SCALE	UNIT	CODE NUMBER	
X.XXX	$\pm 0.10$	X.XXX°	$\pm 1^{\circ}$	DRAW: 绘图:	WANG	2017-01-10	5:1	mm	A008	

修订 REV	标记 MARK	修改摘要 REVISION DESCRIPTION	签名 SIGNATURE	日期 DATE
AO		NEW RELEASE	WANG	2017-01-10



Ordering Information & Dimensions

Circuits	Dimensions(mm)		Circuits	Dimensions(mm)	
	A	B		A	B
4P	3.81	8.86	16P	19.05	24.10
6P	6.35	11.40	18P	21.59	26.64
8P	8.89	13.94	20P	24.13	29.18
10P	11.43	16.48	22P	26.67	31.72
12P	13.97	19.02	24P	29.21	34.26
14P	16.51	21.56	26P	31.75	36.80

SPECIFICATIONS:

Current Rating: 1.2A AC,DC  
Voltage Rating: 250V AC,DC  
Temperature Range: -25°C~+85°C  
Contact Resistance: 20mΩ Max  
Insulation Resistance: 1000MΩ Min  
Withstanding Voltage:500V AC/minute  
Housing Material: LCP,UL94V-0(Black)  
Terminal Material: Copper Alloy/Tin over Nickel



深圳市华德共创科技有限公司

Shenzhen Huade co-create Technology Co.,LTD  
TEL : 0755-27129737 FAX : 0755-29940187

-TOLERANCES- UNLESS OTHERWISE SPECIFIED 公差参数表						TITLE: 1.27mm Pitch 产品名称: 180° Wafer			
X.X	±0.30	X.X°	±3°	APPD: 核准:	XIE	PART NO: 产品编号: HDGC1272WV-S-F-XP			
X.XX	±0.30	X.XX°	±2°	CHECK: 校对:	WANG	DATE	SCALE	UNIT	CODE NUMBER
X.XXX	±0.10	X.XXX°	±1°	DRAW: 绘图:	WANG	2017-01-10	5:1	mm	A008